



Community Water & Wastewater Program

Feasibility Study

Waterford
March 13, 2019

Feasibility Study – What is it?

- Analysis of the current conditions and technical viability of conceptual solutions (options)
- Identifies policy and permitting hurdles associated with solutions (options)
- High-level options screening (5% - 10% project defined)
- Preliminary budgeting tool

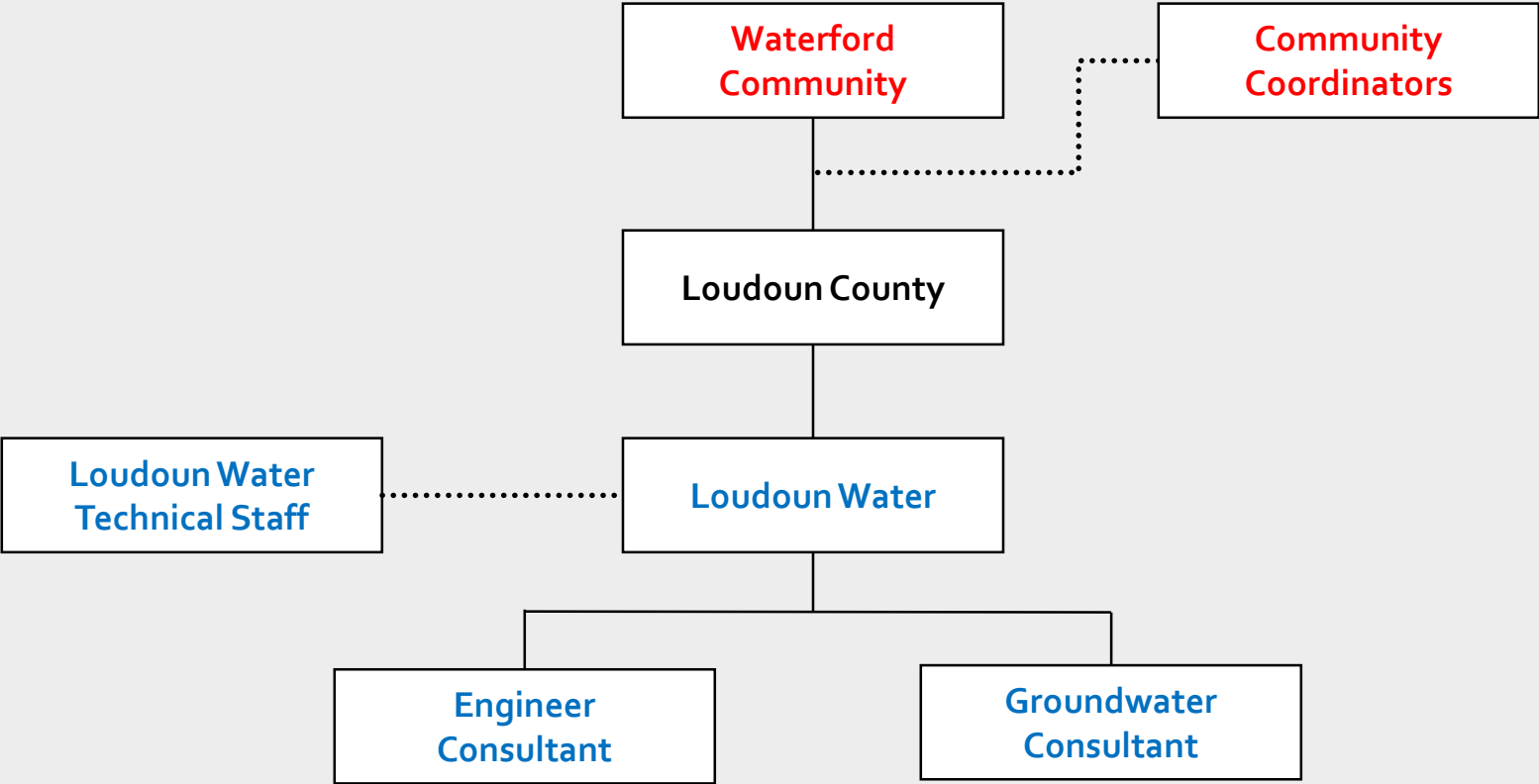
Feasibility Study – What's in It?

- Presents findings on
 - Current conditions
 - Possible solutions
 - Policy related issues
 - Permit requirements
 - Estimated costs (capital and operating)
 - Recommended (solution(s)) for the community

Feasibility Study – What's in It?

- Estimated costs include
 - Construction costs
 - Engineering fees (design and construction)
 - Permit fees
 - Land needs (acquisition and/or easements)
 - Long term operations and maintenance (life-cycle)

Feasibility Study – Typical Project Team



Feasibility Study

Existing Condition
(Baseline)



Inadequate
Water System

Feasibility Study

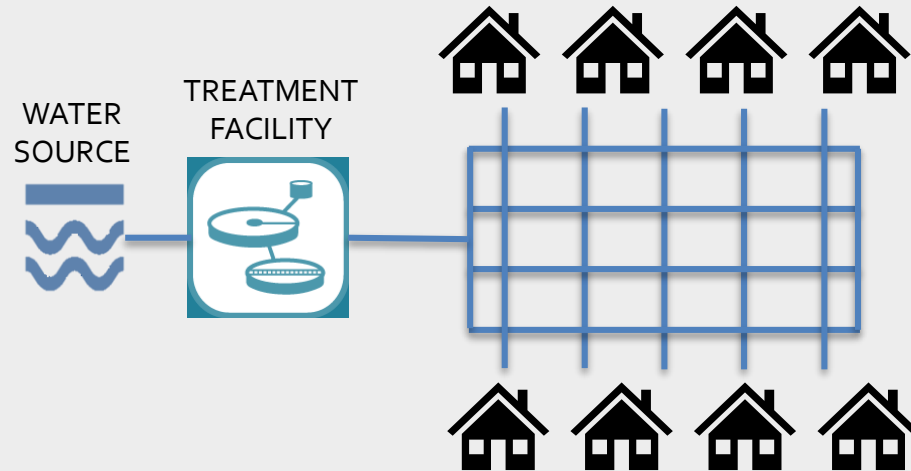
Possible Solution #1



Upgrade/replace on-site
water systems

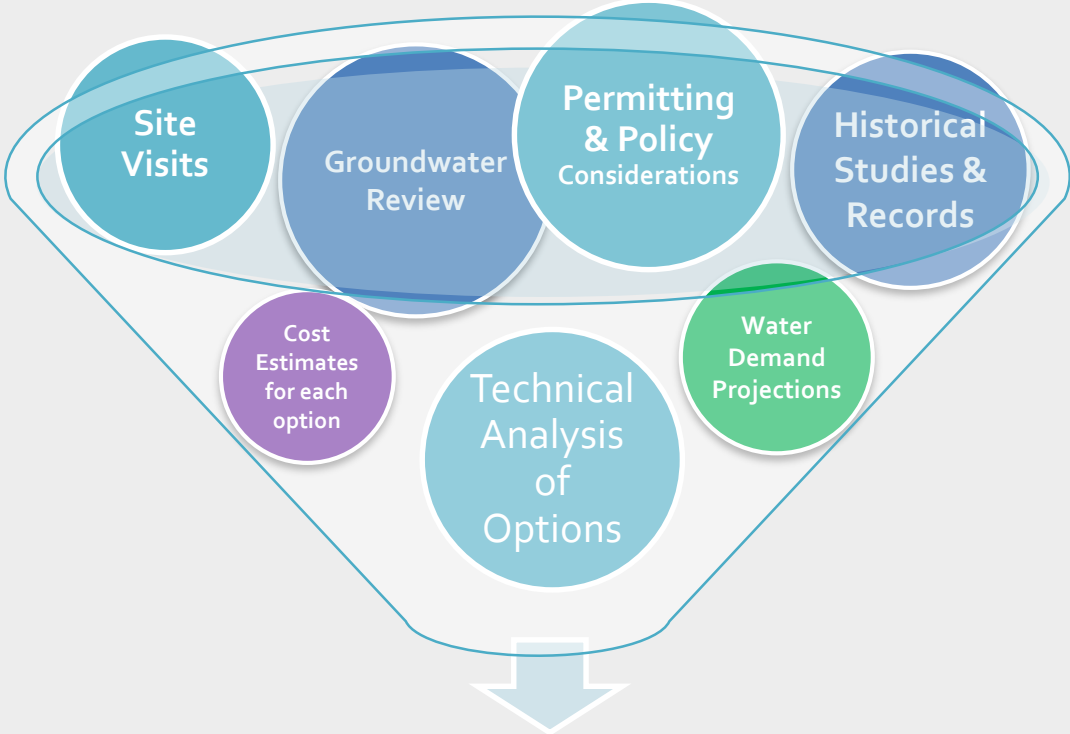
Feasibility Study

Possible Solution #2
(Several variations can exist)



Construct a community water system

Feasibility Study



Recommendations

Feasibility Study – What it is NOT

- NOT Loudoun Water's recommendation of what to do
 - It's an assessment of the options (presented equally)
- NOT the design (level) of any of the solutions
 - High-level options (5% - 10% project defined)
- NOT definitive cost estimates
 - Budget level presented with high/low ranges
- NOT the end of analysis (study)
 - Most favorable option will likely need more study